

ALL IT TAKES IS ONE



91% of cyber crime starts with email² and it only takes one to infiltrate your organization.

EMAIL IS THE MOST POPULAR VECTOR FOR CYBER ATTACKS.

FireEye analyzed a sample of email traffic to identify attack trends used by criminals and enhanced an email security solution that protects the one that matters—you.

¹ FireEye Email Threat Report, September 2018
² Radicati Group Email Statistics Report, 2017-2021

How They Strike



MALWARE-LESS ATTACKS impersonate a trusted sender or company to trick the user into giving away corporate information or assets. These attacks usually employ imitation login pages, malicious links, or forged requests.

MALWARE ATTACKS use email with infected attachments to gain access to a user's computer. The malware can be hidden in a variety of file types such as a PDF or DOC.

65%
growth of phishing attempts in 2017¹

\$12.5B+
in corporate losses caused by CEO fraud attacks¹

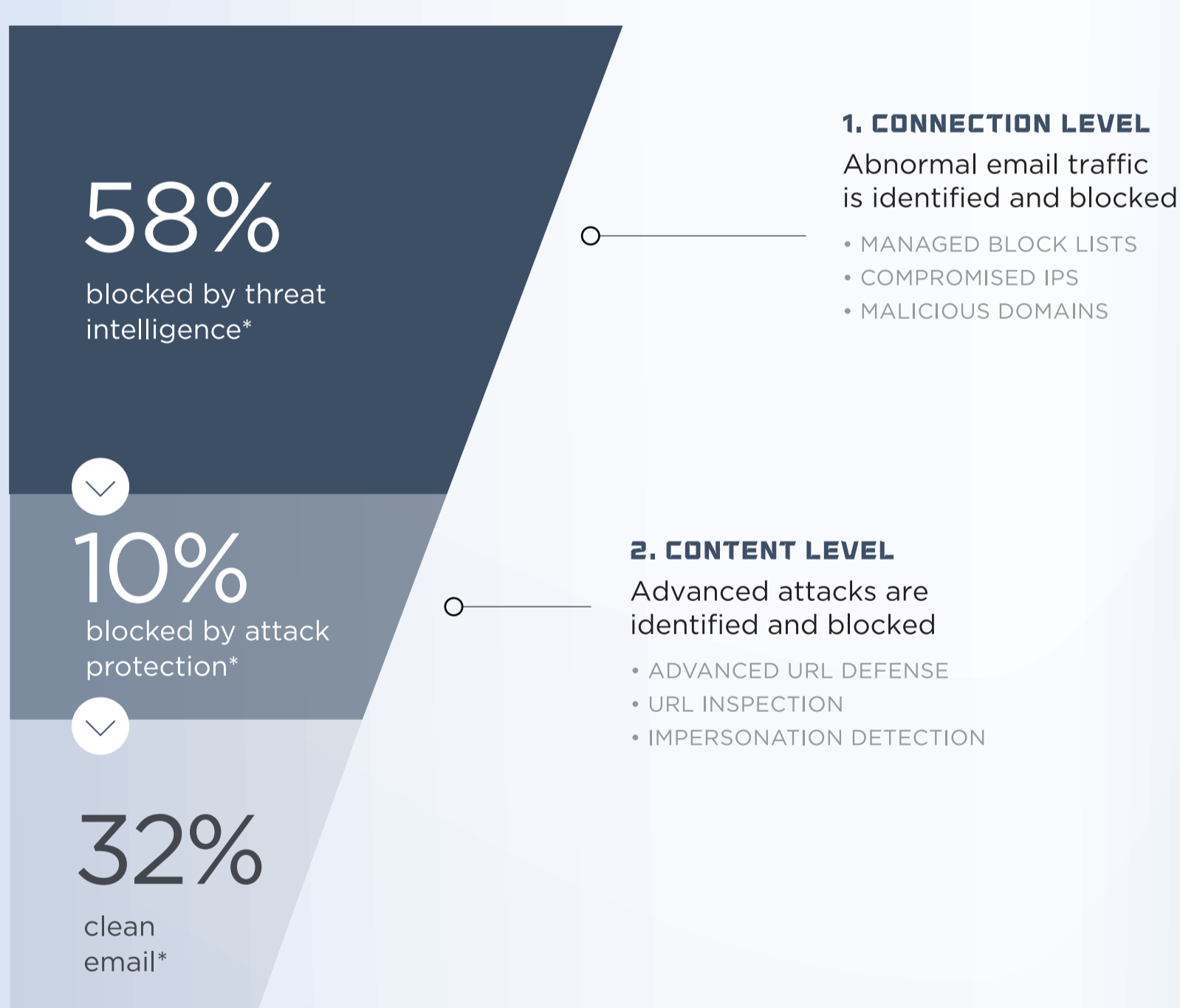
46%
of all ransomware attacks originate from email¹

Ransomware damages reached **\$5 billion** in 2017.²

¹ IC3, Business Email Compromise the 12 Billion Dollar Scam, July 2018
² BusinessWire, International Study Finds Nearly 40% of Enterprises Hit by Ransomware, August 2016

Eliminating Threats

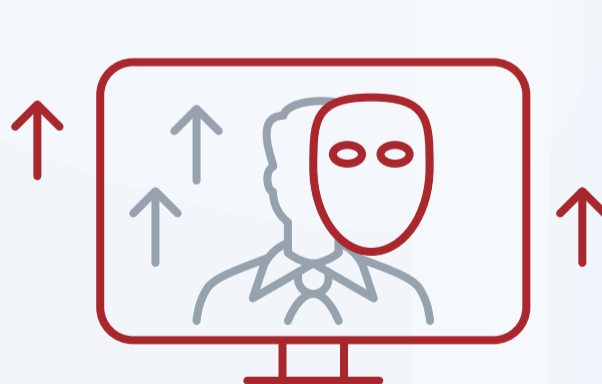
HOW FIREEYE STOPS SUSPICIOUS EMAILS



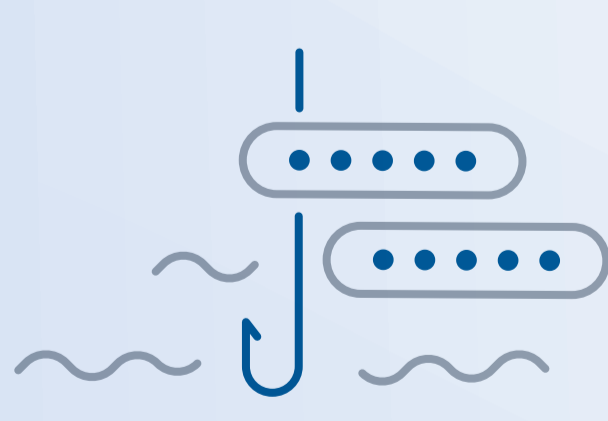
* FireEye Email Threat Report, September 2018

Adapting Attacks

More cyber criminals are using malware-less techniques. Impersonation attacks have increased, utilizing such attacks as spoofed friendly usernames or typo-squatting the recipient's domain.



With email security solutions focused on detecting malware, **cyber criminals are adapting their attacks**, exposing organizations to malware-less assaults such as CEO fraud.



MORE PHISHING

Phishing attempts grew 65% in the last year, and 30% during the 2017 holiday season alone.

MOBILE THREAT

More people are checking email by phone. Because most mobile sender clients display only the sender's name—not an email address—it's easier to trick users into thinking they're corresponding with someone they know.



Want all the findings? Read the FireEye report at www.FireEye.com/email-tactics